



2023

Nature's precious stones, the seal of quality.

ESN Marble

Collection

ESN Marble

ESN Marble Co. was established in Antalya in 2021 to supply the best product and provide quality service for its customers in the natural stone sector.

With 14 years of experience in the sector of the founder, it aims to be the company that offers the highest quality marble supply service to its customers who follow the innovations at world standards and makes a name for itself with its quality in the international market.

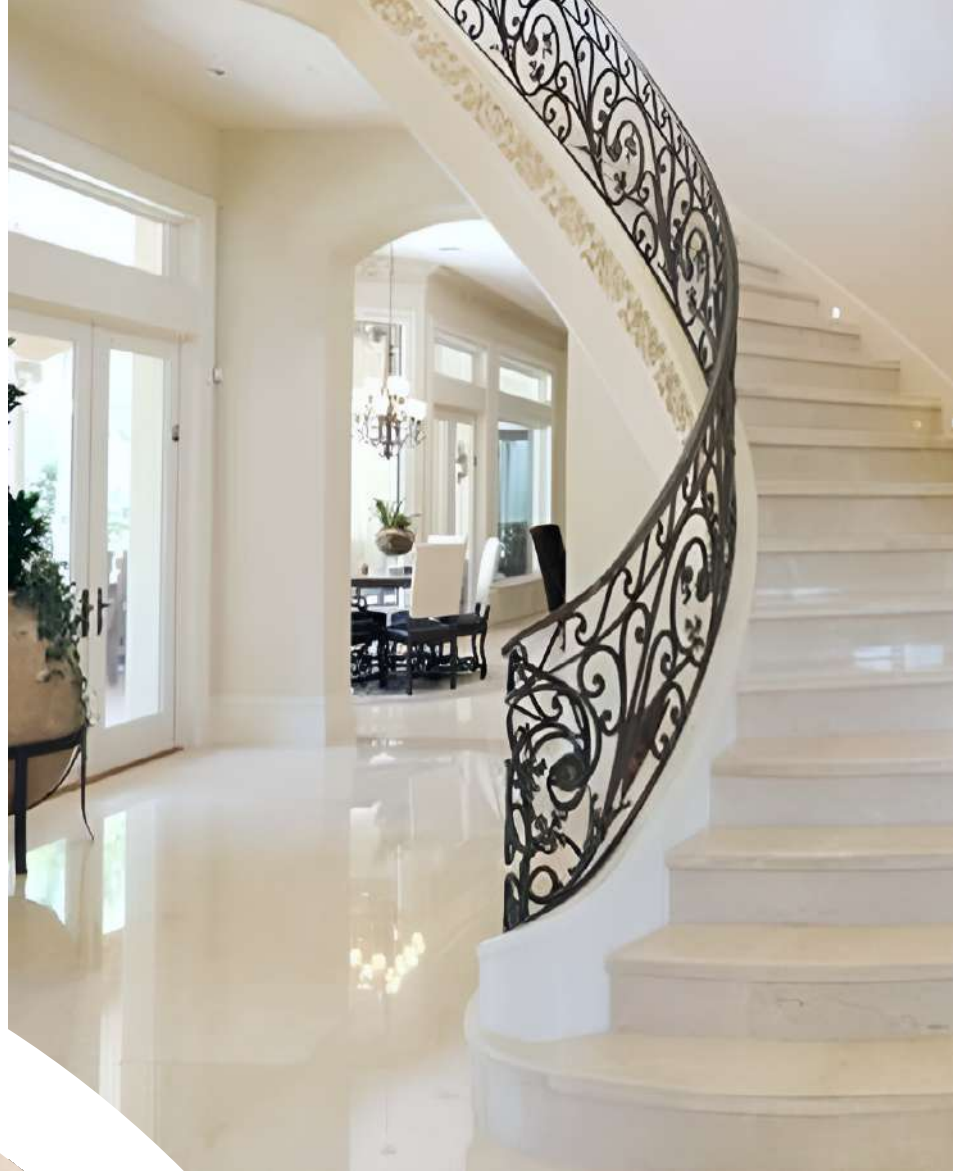
Mission

To categorize the customers' demands in the marble sector according to their price, color, and varieties and to offer the most suitable product to the customers. To represent Turkiye in the international market with our quality service and to be the preferred brand.

Vision

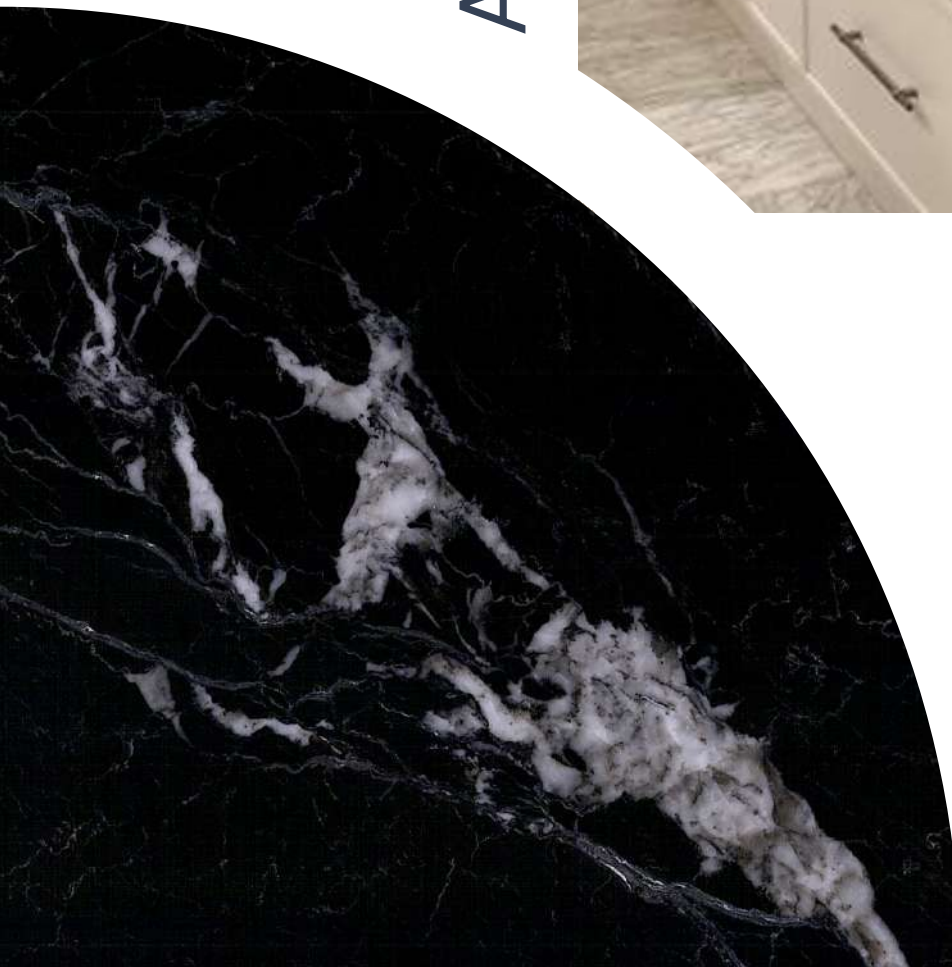
To be a leading brand in customer satisfaction internationally as a company that always develops itself and adopts quality and reliability.

CREMA UNO



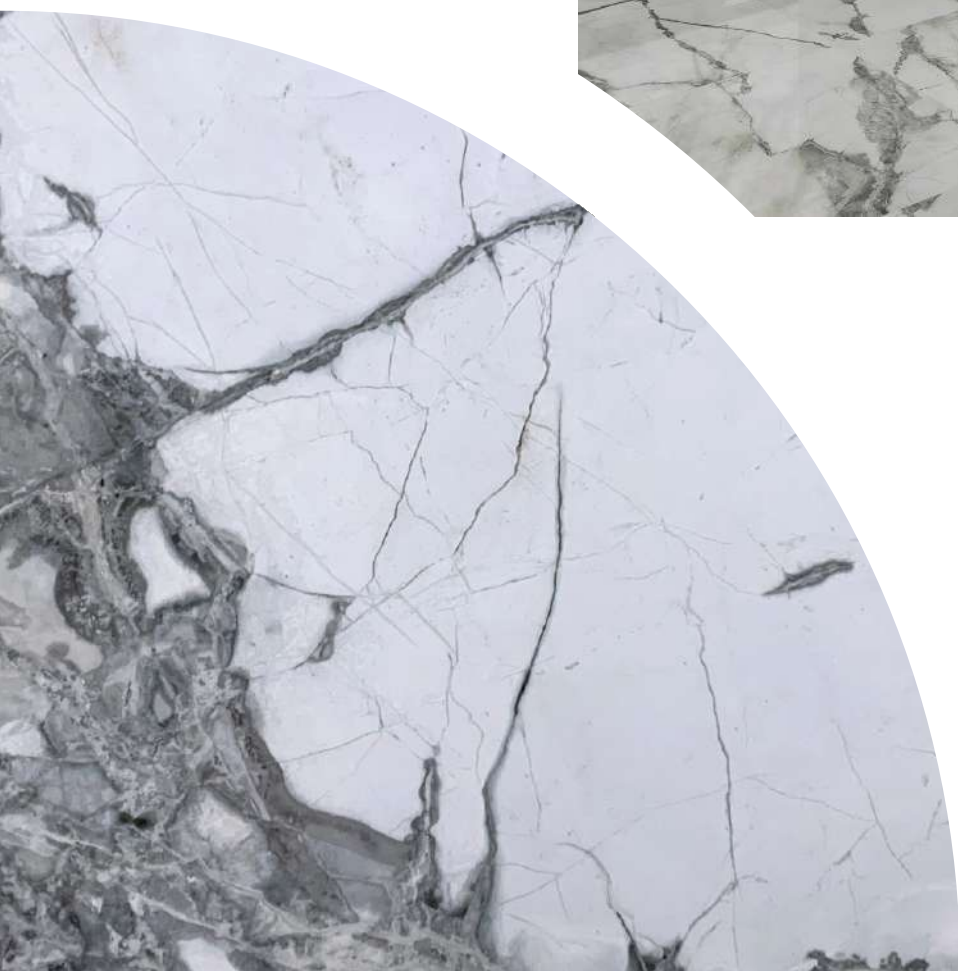
Crema Uno Marble that radiates elegance and sophistication. Carefully sourced and selected for its exceptional quality and unique character, this beige marble with subtle veining is perfect for adding a touch of luxury to any room. Its durability and resistance to heat and moisture also make it a practical choice for high-traffic areas.

ALEXANDRETTE BLACK



Alexanderette Black Marble is a black marble with white veins, commonly used in construction and decoration. It adds elegance to projects and is popular for walls, floors, tabletops, and fireplace portals. It can be used for small details or large slabs, making it ideal for modern interiors.

INVISIBLE GREY



Invisible Grey stone features a shattered pattern that creates a cohesive and unique look. The contrasting dark and light grey colors evoke a sense of confidence and bring forth powerful memories. It is a great addition to any space.

ROSSO LEVANTO



Rosso Levanto is a dark cherry colored marble with a unique spider web pattern and light lines. It creates a luxurious and refined atmosphere and is suitable for many projects including countertops, wall and floor coverings, fireplaces, stair treads, poles, and windowsills. It adds contrast and exclusivity to any decor.

LIFORA ONYX



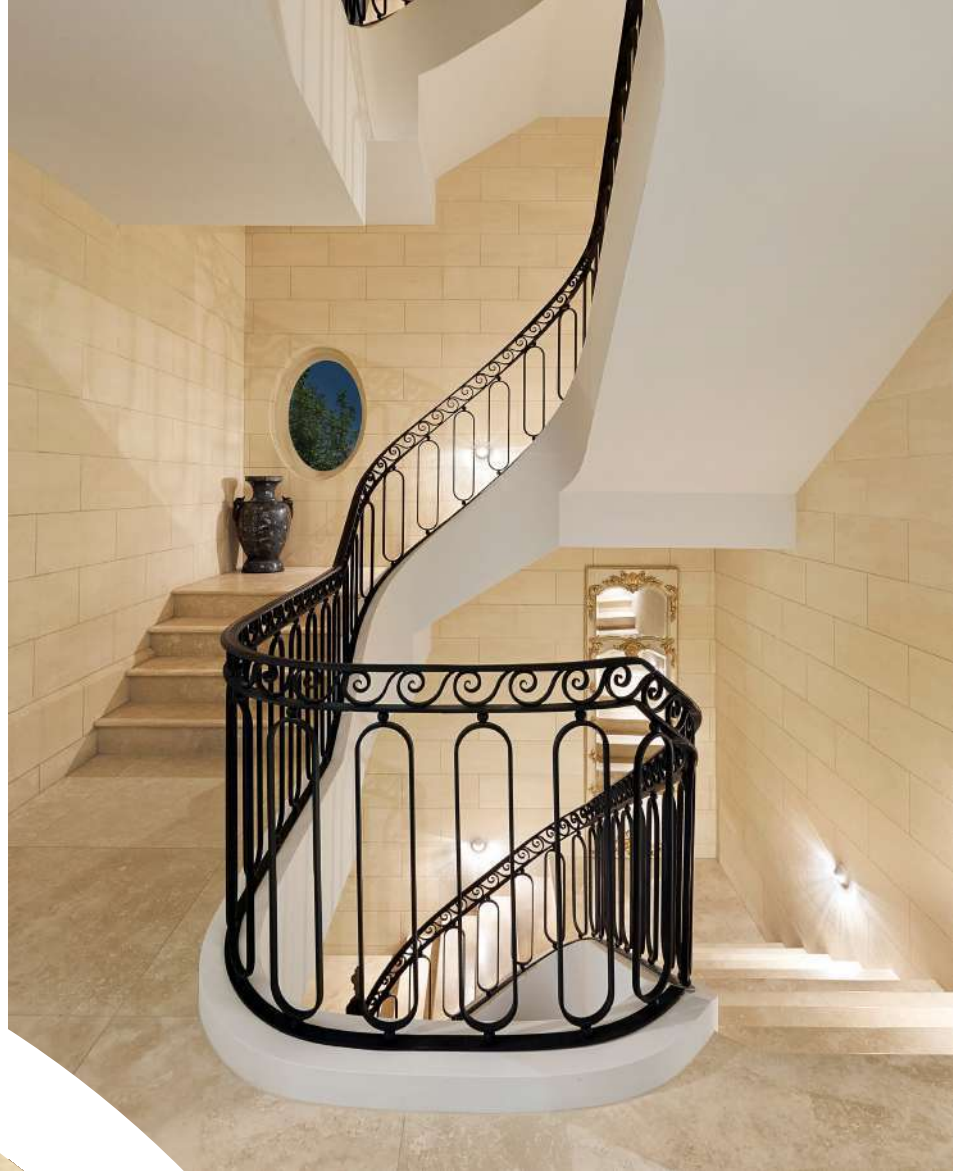
Lifora Onyx is a natural stone with wavy patterns in brown and yellow on a white background. It's great for decoration, used in wall coverings, flooring, and countertops. Its elegant and dynamic visual is perfect for indoor decor.

TUNDRA GREY



Tundra Grey marble is from Turkey and has a unique position in the Turkish stone market. Its grey background with light lines makes it suitable for bookmatching. It's great for indoor and outdoor projects, such as walls, floors, countertops, and fireplaces.

CROSS CUT TRAVERTINE



Light travertine cross cut is a durable stone with a straight cut and light color that adds a refined touch to any environment. Its smooth surface and easy-to-shape structure make it a popular choice for wet and humid areas, wall coverings, and countertops. Its light color enhances the appearance of cleanliness and hygiene.

LILAC



Lilac (Leylak) is white marble, covered with purple, lilac and violet thin veins. The veins form an unusual graphic pattern. Lilac is widely used for lining floors and walls, including bathrooms, for making sinks, countertops, window sills, and for decorating fireplaces. Lilac marble is in high demand in interior design all over the world.

BIANCO IBIZA



Bianco Ibiza is a white marble that has been used for centuries in the Aegean region. Its purity and versatility make it a popular choice for interior spaces such as bathrooms and residential projects. It is also widely used internationally and can be customized with surface treatments.

LIMESTONE CLASSIC



Limestone is a natural stone that has a soft structure and can be used for both indoor and outdoor spaces. It comes in different selections such as grain, sesame, and fossil volume. Limestone walls, paving, and flooring are popular applications. Crushed limestone is also used for interior and exterior projects.

ESN Collection

BEIGE SERIES



**BOTTICINO
#01**



**CREMA NOUVA
#02**



**CREMA UNO
#03**



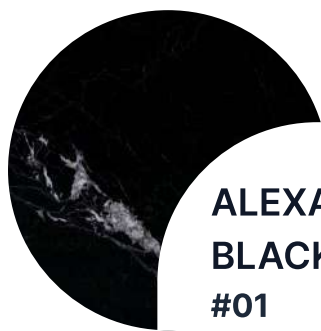
**SANDIEN BEIGE
#04**



**SPIDER BEIGE
#05**

ESN Collection

COLOUR SERIES



**ALEXANDRETTE
BLACK
#01**



**KANSAS GREY
#02**



**CRYSTAL
EMPRADOR
#03**



**DEEP RIVER
#04**



**DIAMOND GREY
#05**



**EAGLE GREY
#06**

ESN Collection

COLOUR SERIES



**EMPRADOR DARK
#07**



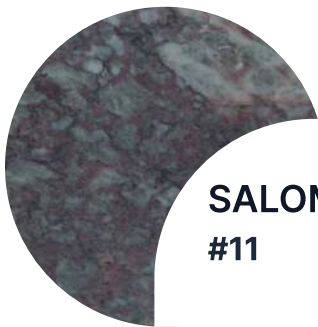
**INVISIBLE GREY
#08**



**ROSALIA
#09**



**ROSSO LEVANTO
#10**



**SALOME
#11**



**SHADOW GREY
#12**

ESN Collection

COLOUR SERIES



SHINE GREY
#13



SILVER RIVER
#14



SPIDER GREY
#15



TUNDRA GREY
#16



VERDE LEVANTO
#17

ESN Collection

WHITE SERIES



**AFYON GOLD
#01**



**BIANCO IBIZA
#02**



**DOLOMITE
#03**



**LILAC
#04**



**NEW YORK
#05**



**PEARL
#06**

ESN Collection

TRAVERTINE SERIES



**LIGHT CROSSCUT
#01**

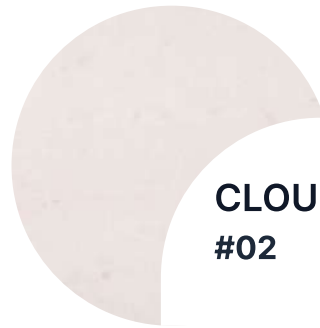


**LIGHT VEINCUT
#02**

LIMESTONE SERIES



**CLASSIC
#01**



**CLOUDY
#02**



**FIORITO
#03**

ESN Collection

ONYX SERIES



**HONEY ONYX
#01**



**LIFORA ONYX
#02**

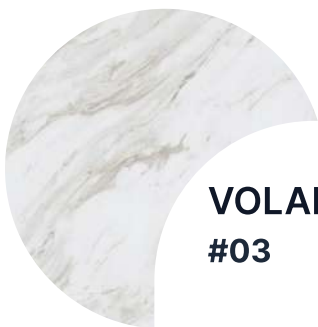
IMPORT SERIES



**BIANCO MONTE
#01**



**NESTOS
#02**



**VOLAKAS
#03**



ESN Marble

www.esnmarble.com

Address: Grsu Mh. Gazi Mustafa
Kemal Blv. Side Sit. A Blok
No:87A/8 Konyaaltı,
Antalya, TRKİYE

Mail: info@esnmarble.com

Mobile: +90 242 999 19 26

Instagram: [@esnmarble](https://www.instagram.com/esnmarble)

Website: www.esnmarble.com

Mail: export@esnmarble.com

WhatsApp: +90 530 085 72 07

Facebook: [@esnmarble](https://www.facebook.com/esnmarble)