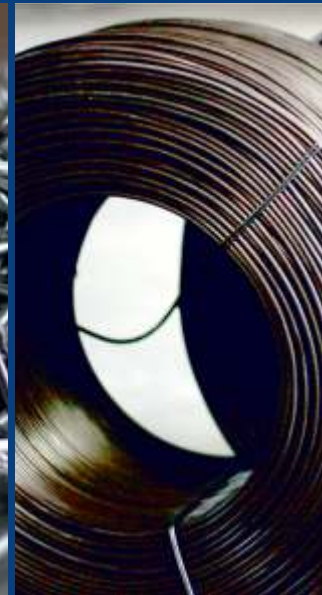




PRIMO METAL

WIRES & FENCES



www.primometal.com



PRIMO METAL

Since the beginning of the 21st century large investments in the wire and fence production have been made in turkey and manufacturers with the latest technologies occurred within the industry. With its highly engaged team and its longstanding expertise Primo Metal brings together customer demand with the products they need in the most efficient way. Located in Istanbul Primo Metal works with the highest operational flexibility. For the production of bale wires Primo Metal has set up a unit in Yalova as strategic location near to its headquarter.

INTRODUCTION





OUR MISSION

Is to deliver high quality products to best prices. Our engaged team combined with our longstanding expertise and knowledge of the wire market makes us a solid and reliable partner for your business. We make it easy for you to get what you need.

OUR STATEMENT

Is to always keep our standards and services high in any situation. As a strong and efficient partner we get our clients the best prices and ensure the whole process from consulting to delivery to be as simple as possible for our customers.

www.primometal.com

COLD DRAWN WIRES

Cold Drawn Wires serves to different applications by their lower or higher carbon contents. Application fields are for production of meshes, nails, screws, nuts, springs, shelves, condansers and CNC Applications.



TECHNICAL SPECIFICATIONS

Product Standart	EN 10218
Diameter Range	1.00 - 9.00 mm
Tensile Strength	500 - 1800 N/mm ²
Coil Weight	10 - 1000 kg
Coil Int/Ext Dimensions	20 - 40 cm / 45 - 80 cm 50 - 75 cm / 50 - 100 cm



HOT DIP GALVANIZED WIRES

Hot Dip Galvanized Wires are produced by dipping low or high carbon wires into melted zinc bath. The aim of the galvanization is to protect wire against oxidizing and increase its service life. Most common applications for hot dip galvanized wires are fences, gabions, barbed wires, razor blade wires, coat hangers, pvc coated wires, vineyards, staples, springs, cables and armouring.



TECHNICAL SPECIFICATIONS

Product Standart	EN 10244-2
Diameter Range	0.80 - 8.00 mm
Tensile Strength	400 - 1800 N/mm ²
Zinc Coating Mass	40-300 g/m ²
Coil Weight	50 - 1000 kg



BARBED WIRES



Barbed wires are used for protection of lands or properties against animal or human attack. Its also a good material for border determinations of lands. There are two main type of barbed wires as conventional and reverse twist type.

Reverse Twist Barbed Wire

This type of barbed wire is manufactured from thinner wires compared to conventional type. According to the different diameter, zinc coating and tensile properties price and resistance of the goods changes.

Conventional Barbed Wire

This type of barbed wire is manufactured from thicker wires compared to reverse twist type. This is mostly used for field applications to protect against animal attack.



Conventional Barbed Wire



Reverse Twist Barbed Wire

Product Standart	EN 10223-1
------------------	------------

Reverse Twist Barbed Wire

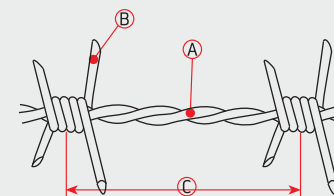
Line Wire Diameter	Barb Wire Diameter	Distance Between Barbs	Roll Weight	Roll Length
Ⓐ 1,50 mm	Ⓑ 1,40 mm	Ⓒ 100 mm	9-10 kg	250 meters
Ⓐ 1,70 mm	Ⓑ 1,50 mm	Ⓒ 100 mm	12-13 kg	250 meters
Ⓐ 1,80 mm	Ⓑ 1,80 mm	Ⓒ 100 mm	16-17 kg	250 meters
Ⓐ 2,00 mm	Ⓑ 2,00 mm	Ⓒ 100 mm	19-20 kg	250 meters

Conventional Barbed Wire

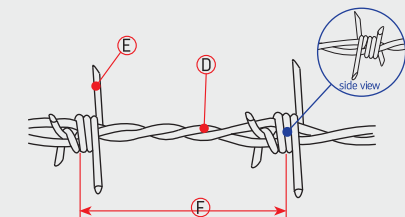
Line Wire Diameter	Barb Wire Diameter	Distance Between Barbs	Roll Weight	Roll Length
Ⓓ 2,50 mm	Ⓔ 2,15 mm	Ⓕ 75 mm	20-22 kg	Approximately ~165 meters

TECHNICAL SPECIFICATIONS

reverse twist barbed wire



conventional barbed wire



Note: Wire diameters and roll lengths can be changed according to customer request.

BLACK ANNEALED WIRES

Black Annealed Wires are heat treated wires manufactured from cold drawn wires. Heat treatment process allows wire to become softer and used for tying applications. The most common usage of black annealed wire is for rebar binding at constructions.

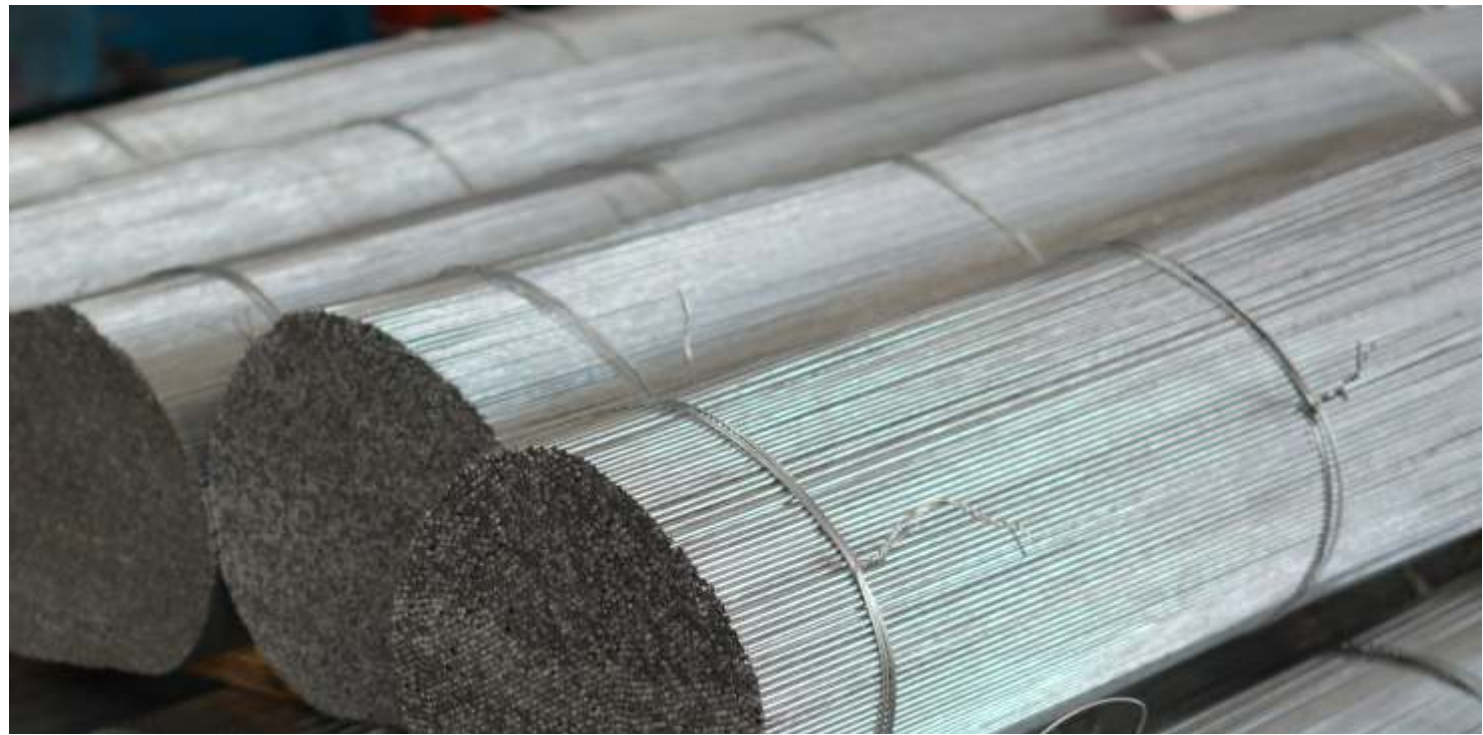
TECHNICAL SPECIFICATIONS

Product Standart	EN 10218
Diameter Range	1.20 - 8.00 mm
Tensile Strength	300 - 400 N/mm ²
Coil Weights	8 - 40 kg (1.20-2.50mm) 50 - 500 kg (1.20-8.00mm)
Coil Int/Ext Dia	200 - 400 mm (10 - 40 kg Coils) 400 - 750 mm (50 - 500kg Coils)



CUT WIRES

Cut wires are straight wires with custom lengths according to customer request. We can offer cold drawn , galvanized or black annealed wires straightened and cut.



TECHNICAL SPECIFICATIONS

Diameters	3.00 - 8.00mm
Wire Type	Galvanized, Cold Drawn or Black Annealed
Tensile Strength	400 - 800 N/mm ²
Bundle Weight	1000 - 2000 kg
Packing Type	In Wooden Boxes On Wooden Blocks
Raw Material	SAE 1006 - 1008 - 1010
Field Of Apply	Welded Mesh Production Panel Fence Production Framework for Greenhouses



BALE WIRES (OILED)

Oiled bale wires are used for baling application for hays and waste cartons/papers/plastics/metals. With the quality of our raw materials you will not have any troubles during the twisting operation at the end of the bales.

TECHNICAL SPECIFICATIONS

Diameters	1.80 - 4.00mm
Tensile Strength	300 - 400 N/mm ²
Coil Weights	40 - 50 kg or 300 - 700 kg Rosette Coils
Coil Int/Ext Dia	200 - 350mm (Small Coils) 450 - 800mm (Rosette Coils)
Raw Material	SAE 1006 - 1008
Field Of Apply	Waste Carton Bales Waste Plastic Bales Waste Metal Bales Hay Bales



COMMON NAILS

Common Nails are preferred for to use on woods. The most common usage is for wooden moulds for concrete. Our standard production is 6 – 15cm of length with a diameter of 2.70 – 4.50mm respectively. The head of our nails are produced as flagged type to prevent sliding property during hammer hits. We pack our nails at 5 - 25kg of carton boxes on pallets where a worker can easily carry.



PVC COATED WIRE

Pvc Coated Wires are coated by plastic extrusion method. The aim of the pvc coated wires are to expand the service life of wire against oxidation. Most common usages are for chain link fencing and barbed wires production.



TECHNICAL SPECIFICATIONS

Product Standart	EN 10245-2
Pvc Coated Dia. Range	3,00 - 5,00 mm
Coating Thickness	1,00 mm
Tensile Strength	400 - 550 N/mm ²
Coil Weight	100 - 500 kg
Coil Dimensions/In-Out	45 – 80 cm

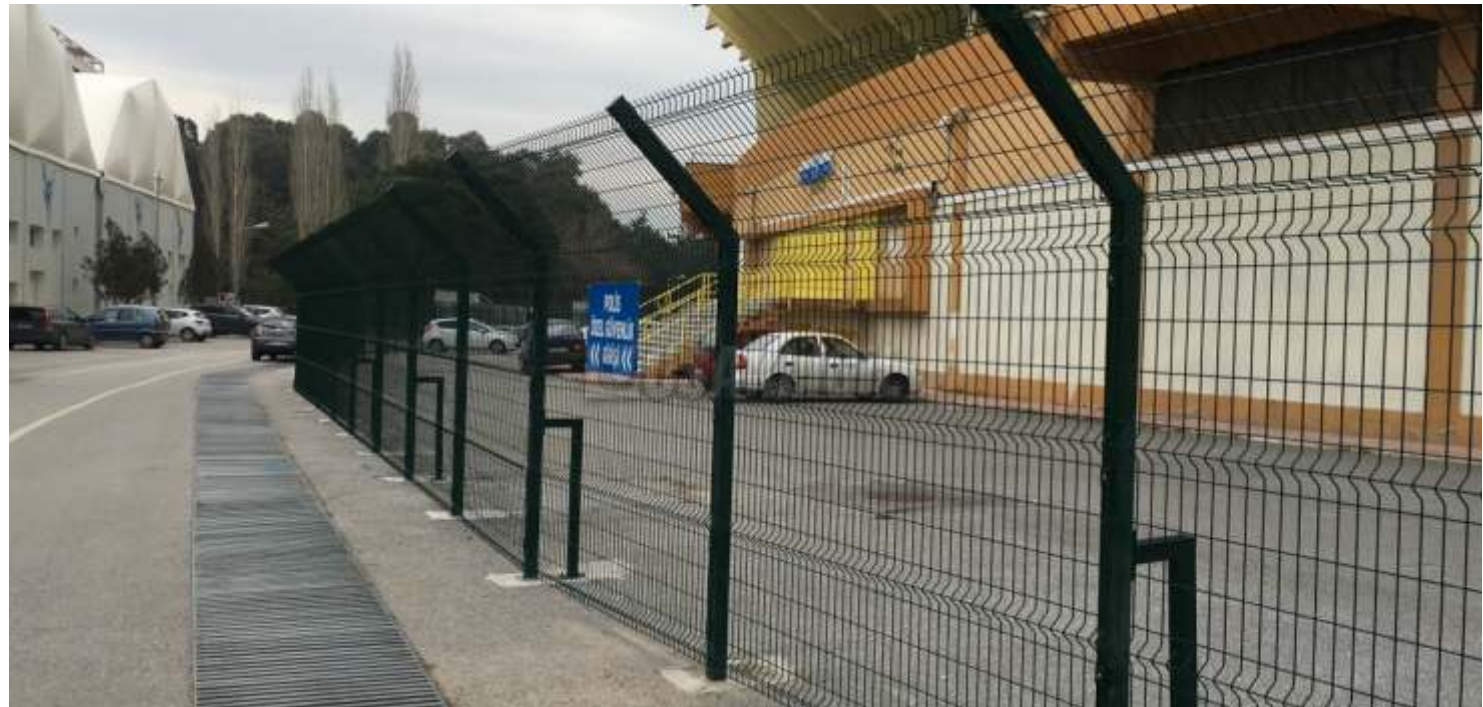
PANEL FENCE

There are several type of Panel Fences like single wires, double wires or security fences. These products can be manufactured from Hot Dip Galvanized Wires or Cold Drawn Wires according to customer request. Fences manufactured from cold drawn wires can also be zinc coated afterwards with heavy zinc coating for aggressive environmental influences. General production is made by hot dip galvanized wires then electrostatic painted. We can offer with full set of product with post and accessories included.



TECHNICAL SPECIFICATIONS

Fence Types	Single / Double / Security
Diameter Range	3.00 - 8.00mm (-/+0.10mm)
Core Wire	Hot Dip Galvanized Wire (Zn:60 gr/m2)
Height	Max.600cm
Width	Max.250cm
Painting	Electrostatic Powder Painting
Posts	50x50mm, 60x60mm, 40x60mm
Mesh Size	5x15cm or 5x20cm
Wires on Bends	Single or Double



GRASS FENCE

Grass fences seem like natural plants but they are plastics which are UV protected and unflammmable. These materials can be used for several years without any change on colour and form. One of the most preferred features of these fences is that they prevent the back side from being visible.



TECHNICAL SPECIFICATIONS

Diameter	1.60 x 1.60mm (-/+0.05mm)
Tensile Strength	400 - 500 N/mm
Zinc Coating	Min.50 gr/m ²
Colour	Green – Yellow – White – Blue Black – Anthracite (UV Protection)
Mesh Size	42 x 42mm / 48 x 48mm (-/+3mm)
Roll Length	10 Meter



HEXAGONAL MESHES

Hexagonal mesh are mechanically more resistant due to their physical properties compared to their counterparts. They are manufactured from hot dip galvanized wires. These fences can be manufactures with different mesh sizes, diameters and heights according to customer request. Standard products are;



TECHNICAL SPECIFICATIONS

Wire Diameter	0.60 – 1.00 – 1.40 – 1.60 – 2.00mm
Mesh Size	2” – 3”
Length of Rolls	20 meter
Height of Rolls	1.00 – 1.20 – 1.50 – 1.80 – 2.00meter





PRIMO METAL

A series of horizontal dotted lines for writing, spanning the width of the page.

YOUR SUCCESS IS BORN HERE



PRIMO METAL
WIRES & FENCES



Ramazanođlu Mah. Sanayi Cad. No: 44 Kurtky Sanayi Sitesi C Blok D.15 Pendik İstanbul, Turkey
PHN: +90 544 344 7435

www.primometal.com • info@primometal.com