



COMPANY PROFILE

TANIS GROUP

www.tanismilling.com

SINCE **1956**



Your
Milling Partner

TANIS Group is a global leader in post-harvest agro-industrial machinery, proudly serving the industry since 1956 from Turkey. We specialize in the manufacturing, export, installation, and commissioning of high-performance seed production plants, flour and semolina mills, maize milling plants, oilseed and pulse processing facilities, grain storage and handling systems, and advanced feed mills. Utilizing cutting-edge technology, we offer solutions with flexible capacities, designed as compact or concrete-structured systems. With a state-of-the-art 30,000 m² production facility in the Gaziantep industrial zone, we export to more than 70 countries worldwide, delivering excellence and innovation to the global market.





PRODUCT & SERVICES

TANIS MILLING TECHNOLOGY



Complete Turnkey
Wheat Flour And Semolina Mills



Complete Turnkey
Maize Flour And Semolina Mills



Complete Integrated
Food Complex Projects

TANIS SEED PRODUCTION TECHNOLOGIES



Lentil And Pulses Factories



Color Sorting Machines/
Optical Sorters

TANIS FEED MILL



Complete Turnkey
Animal Feed Mills

TANIS STEEL STRUCTURE AND STORAGE



Complete **Storage** Facilities



Steel Structure Construction
For Agro Industries

LABORATORY INSTRUMENTS AND SPARE PARTS



Laboratory Instruments
Quality Control an Assurance



Spare Parts, Consumables
and Accessories



WHEAT PROCESSING PROCESS AND IMPORTANCE

Wheat Processing: Importance and Key Stages

Wheat is one of the most essential food staples in human history and remains a primary global food source. The wheat processing cycle consists of three critical stages:

- **Cleaning:** Removes impurities and foreign materials to ensure purity.
- **Conditioning:** Adjusts moisture levels for optimal milling performance.
- **Milling:** Transforms wheat into various types of flour.

Each stage plays a vital role in ensuring the production of high-quality, safe, and nutritious wheat products.



Thor Roller Mill

The Thor Roller Mill efficiently grinds grains into high-quality flour using precision-engineered smooth or fluted rollers. Its advanced design features specialized inner surface materials that minimize particle adhesion, ensuring seamless operation and consistent milling performance.



Titanius Plansifter

The Titanius Plansifter is designed for the efficient sieving and classification of ground wheat in milling processes. It ensures precise separation, following the mill flow diagram, to optimize product quality and consistency.



Puridant Semolina Purifier

The Puridant Semolina Purifier is designed to clean, classify, and extract semolina in flour mills. By removing lighter bran particles, it enhances the purity and quality of the final product.





INTEGRATED SYSTEMS:

- Integrated Bread Production System
- Pasta Manufacturing System
- Bakery and Confectionery Production System
- Couscous Production System
- Noodle and Instant Noodle Production System
- Flatbread and Tortilla Production System
- Breakfast Cereal Production System
- Snack Food Production System
- Pre-Mix and Flour Blend Production System
- Frozen Dough Production System
- Animal Feed Production System

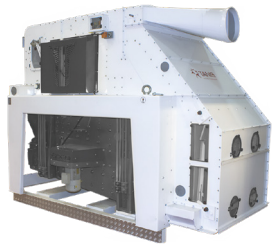
INTEGRATED SYSTEMS



How is Flour Obtained?

This flow sheet provides a streamlined overview of the milling process for those unfamiliar with its intricacies.

In practice, the sequence, number, and quality of procedures vary based on mill design, technology, and production requirements.



PRE-CLEANING SEPARATION

Aeroscreen Cleaner high-capacity machine that removes impurities from seeds and cereals, increasing their lifespan



NEW TYPE ROTARY CLEANER SCREEN

Removes impurities from wheat using air duct sections and a orbital rotating sieve system.



SCOURING AND PEELING

Removing bran from wheat in the cleaning and preparation stages.



B1 CLEAN WHEAT SCALE

Weight measurement system monitors granular material flow for accurate mill yield information.



SILO

The cleaned wheat is stored in silos before being transferred to the mill for further processing.



DE STONER

Separation of same length however different density stones and impurities from grains.



COLOR SORTER

Optical sorting used to separate impurities and infected wheats on color basis.



THOR ROLLER MILL

The cleaned and conditioned wheat is again processed through rollers to Break, course and fine.



WHEAT SCALE

Weight measurement system monitors granular material flow for accurate intake wheat information.



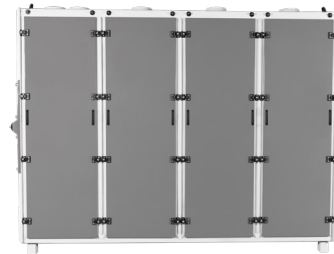
INDENT CYLINDER

Trieurs are commonly used for length grading of granular materials and unwanted short or long impurities.



WHEAT CONDITIONING & TEMPERING

Evenly distributes water to reach required moisture, to allow the separation of bran and endosperm.



TITANIUS PLANSIFTER

Sieving and classification flour. The sieving process is arranged according to the mill diagram.



PURIDANT SEMOLINA PURIFIER

Clean and classify products in by removing lighter bran and improving flour quality.



ROLLER MILL

The broken wheat and sifted flour processed through different rollers to Break, course and fine.



BRAN FINISHERS

Separate flour from bran, increasing extraction and preventing loss.



FLOUR SCALES

Weight measurement system monitors granular material flow for accurate mill yield information.



DETACHERS

Grinds the product in dense semolina passages, resulting in higher flour yield with less energy.



BRAN SCALES

Weight measurement system monitors granular material flow for accurate mill yield information.



CONTROL PLANSIFTER

Sifting flour before packaging, preventing any foreign matter from being packed into it.



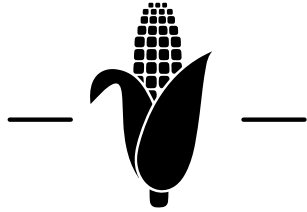
BRAN BINS & PACKING

Separated bran is collected, weighed, and packed for storage or distribution.



FLOUR BINS & PACKING

Final flour is collected, weighed, and packed, ready for storage or distribution.



MAIZE PROCESSING PROCESS AND IMPORTANCE

Maize Processing: Importance and Key Stages

Corn is a vital grain consumed globally, serving as both a staple food and animal feed. The maize processing journey includes essential stages such as cleaning, milling, and product separation.

- **Cleaning:** Removes foreign materials to ensure purity.
- **Milling:** Transforms corn into flour and grits.
- **Product Separation:** Enhances quality and consistency.

These processes not only improve the nutritional value of maize but also extend its shelf life, making it more suitable for consumption and storage.



Thor Roller Mill

The Thor Roller Mill efficiently grinds grains into high-quality flour using precision-engineered smooth or fluted rollers. Its advanced design features specialized inner surface materials that minimize particle adhesion, ensuring seamless operation and consistent milling performance.



Puridant Semolina Purifier

The Puridant Semolina Purifier is designed to clean, classify, and extract semolina in flour mills. By removing lighter bran particles, it enhances the purity and quality of the final product.



Corn Degerminator

The maize degerminator is an essential machine in maize milling plants. It effectively separates high-oil-content maize germs, preventing them from mixing with the flour and ensuring a higher-quality final product.

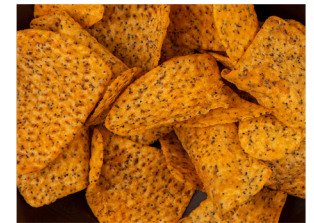




INTEGRATED SYSTEMS:

- Tortilla and Corn Chip Production System
- Breakfast Cereal Production System
- Snack Food Production System
- Animal Feed Production System
- Starch and Sweetener Production System
- Pre-Mix and Flour Blend Production System
- Gluten-Free Product Line
- Canned or Frozen Maize Products
- Maize-Based Beverage Production System
- Biofuel Production System
- Maize-Based Baby Food Production System
- Maize-Based Protein Supplements
- Maize-Based Biodegradable Packaging
- Maize-Based Pet Food Production System
- Maize-Based Fermented Products

INTEGRATED SYSTEMS





SEED AND PULSE PROCESSING

Seed and Pulse Processing

Seeds and pulses are highly nutritious and serve as key food sources for sustainable agriculture. The processing involves several crucial stages:

- **Cleaning:** Removes impurities to ensure quality.
- **Sorting:** Classifies products based on size, shape, and quality.
- **Packaging:** Prepares products for safe storage and distribution.
- **Product Separation:** Ensures uniformity and enhances nutritional value.

These steps help maintain the nutritional integrity of seeds and pulses while ensuring safe and high-quality food for consumers.



Super Fine Cleaner

The Thor Roller Mill efficiently grinds grains into high-quality flour using precision-engineered smooth or fluted rollers. Its advanced design features specialized inner surface materials that minimize particle adhesion, ensuring seamless operation and consistent milling performance.



Titanus Plansifter

The vertical peeling machine is used in pulses processing plants to remove the outer layer of the product from the seed.



Gravity Separator

The gravity separator is a valuable tool for accurately separating agricultural products with slight differences in size and weight.

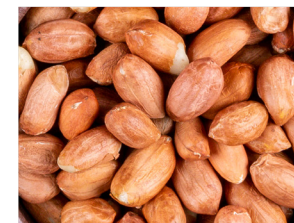




INTEGRATED SYSTEMS:

- Seed Processing & Production Systems
- Seed Cleaning & Multiplication Systems
- Seed Production Lines
- Oilseed & Pulse Cleaning Plants
- Sesame Processing Lines
- Coffee Processing Lines
- Lentil Processing Lines
- Soybean, Green Bean & Yellow Pea Processing Lines
- Pulse Cleaning & Polishing Lines
- Nut & Hazelnut Processing Plants
- Sesame Peeling Lines
- Sunflower Seed Processing Lines
- Chia & Flaxseed Cleaning Lines
- Peanut Processing Plants
- Buckwheat & Quinoa Cleaning Systems

INTEGRATED SYSTEMS





FEED PRODUCTION PROCESS AND IMPORTANCE

Feed Production: Process and Importance

Feed production plays a vital role in ensuring animal health and productivity. The process involves several key stages:

- **Cleaning:** Removes impurities to ensure feed quality.
- **Grinding:** Breaks down raw materials for better digestion.
- **Mixing:** Combines ingredients to achieve balanced nutrition.
- **Pelleting:** Compresses feed into uniform, easy-to-consume pellets.

Each stage is optimized to meet the nutritional needs of animals, enhancing their growth and overall well-being.



Hammer Mill

The hammer mill is an essential tool for milling grains, cereals, and bran with high quality, efficiency, and longevity.



Molasses Mixer

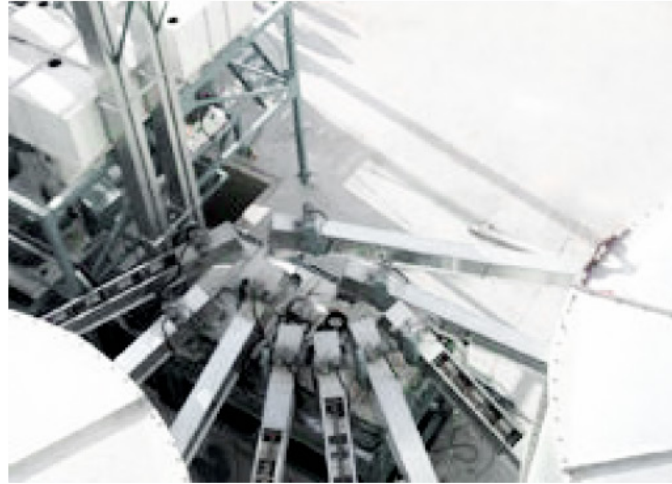
Molasses mixers are used to mix cane, beet and corn sugar molasses in feed mills.



Pellet Press

Pellet mills are used to make small and uniform pellets for animal feed and other industries.





INTEGRATED SYSTEMS:

- Poultry Feed
- Chick Mash – Starter feed for chicks
- Broiler Feed – Feed for meat-producing chickens
- Layer Feed – Feed for egg-laying hens
- Ruminant Feed
- Dairy Feed – Feed for dairy cows
- Fattening Feed – Feed for beef cattle
- Other Feeds
- Pet Feed (Pet food)
- Fish Feed (Fish food)

INTEGRATED SYSTEMS





LABORATORY INSTRUMENTS QUALITY CONTROL AN ASSUARENCE

Laboratory instruments play a critical role in ensuring the quality and consistency of wheat and flour during milling and production.

These tools assess physical, chemical, and functional properties to meet industry standards and customer expectations.



Absograph

The Absograph 500 is a precision instrument for analyzing water absorption and dough properties, helping millers and bakers optimize formulations and ensure consistent quality.



Resistograph

The Resistograph 500 is a high-precision device for measuring dough resistance and elasticity, aiding millers and bakers in quality control and formulation optimization.



Roller Mill

The Lab Mill is a compact, high-precision milling device designed for laboratory use, providing accurate flour quality analysis for millers and researchers.





COLOR SORTING MACHINES / OPTICAL SORTERS

SORTON Brand Color Sorter is an advanced optical sorting machine designed to enhance grain and seed quality by removing impurities, discolored particles, and foreign materials with high precision.

Using cutting-edge camera technology and AI-driven algorithms, SORTON efficiently identifies and separates defective grains, ensuring a superior final product.

Ideal for wheat, maize, rice, and pulses, this sorter increases yield, reduces waste, and improves overall milling efficiency.

With its user-friendly interface and high-speed performance, SORTON is a reliable solution for modern grain processing industries seeking excellence in quality control.

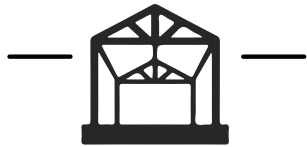




COMPLETE STORAGE FACILITIES

We offer premium storage solutions, including conical and flat-bottom galvanized silos for grain, pulses, flour, finished products, and raw materials. Our high-capacity pre-cleaning and handling systems ensure optimal material flow and preservation. Additionally, we provide comprehensive solutions integrating drying, handling, pre-cleaning, monitoring, and quality control equipment to enhance storage efficiency and maintain product integrity.





STEEL STRUCTURE CONSTRUCTION FOR AGRO INDUSTRIES

We provide complete steel building solutions for flour mills, feed industries, and agro-processing facilities.

Our offerings include hangar-type buildings, multi-story milling structures, and fully integrated buildings with process silos.

Additionally, we specialize in steel chassis work for compact milling solutions and offer extension and expansion projects for existing structures.



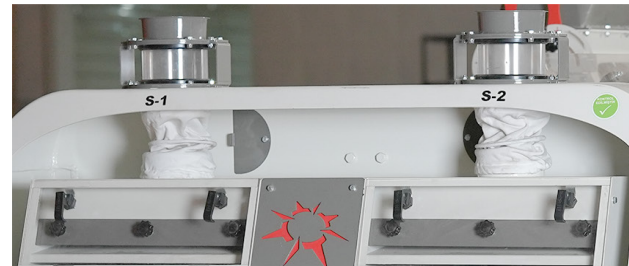
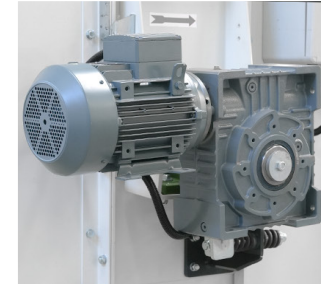
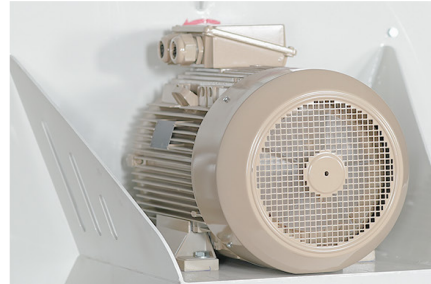
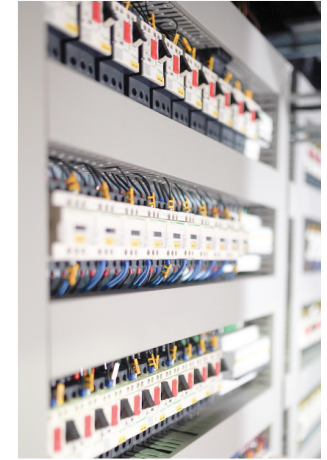
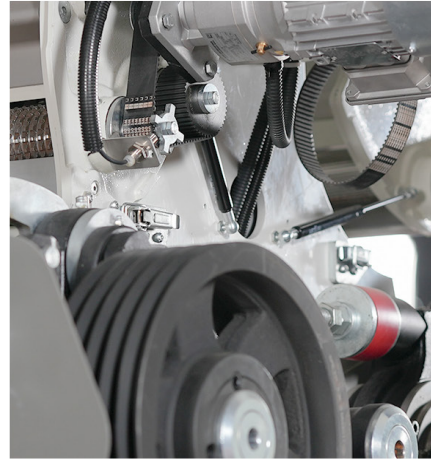


SPARE PARTS CONSUMABLES AND ACCESSORIES

At **Tanis Milling Technologies**, we offer a comprehensive range of high-quality spare parts, consumables, and accessories to support various sectors.

Our products include precision-engineered components for **milling**, ensuring the optimal performance of wheat and maize milling machines; **seed processing**, providing durable parts for efficient seed cleaning and processing; and **feed milling**, supplying essential components for smooth feed production operations. We also offer **silos and handling** solutions with reliable spare parts for grain storage systems and material handling equipment, as well as **laboratory equipment**, delivering precision consumables for testing and quality control.

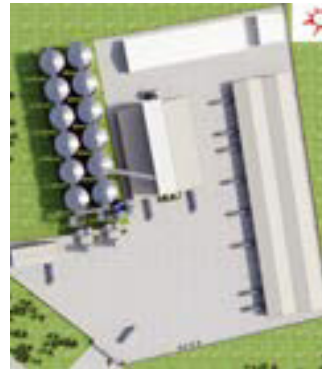
Additionally, our services include **customized spare parts solutions, technical support, maintenance services, and equipment upgrades**, ensuring seamless operation and enhanced efficiency across all milling and processing systems.





COMPLETE INTEGRATED FOOD COMPLEX PROJECTS

We design and manufacture complete turnkey integrated food complex facilities, seamlessly combining our expertise in grain storage, milling, and value-added processing. Our solutions encompass the entire production chain—from raw material intake and advanced storage systems to high-performance wheat and maize milling technologies. Beyond primary processing, we integrate additional value-enhancing systems, such as mixing, fortification, and packaging, ensuring a streamlined and efficient operation. With our comprehensive approach, we deliver fully customized facilities that optimize material flow, maintain superior product quality, and support long-term operational success.





www.tanis.com.tr
info@tanis.com.tr - T: +90 342 377 2222
Tanış Değirmen Makine San. Tic. Aş.
1.OSB 83101 Nolu Cd. No:27, 27120
Başpınar/Gaziantep/TÜRKİYE